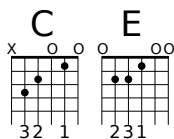


## New features in 2.11 since 2.10

- Harp pedalling diagrams were added:



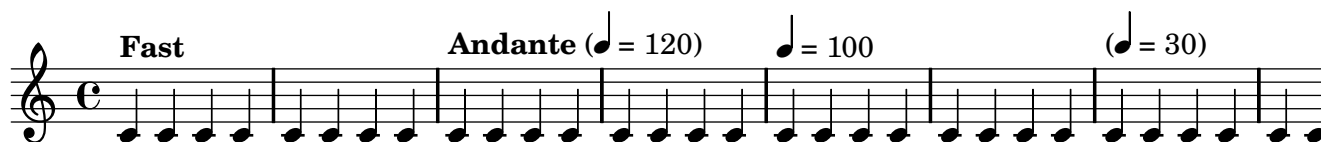
- Predefined, user-configurable, transposable fret diagrams are now available in the `FretBoards` context:



- The following syntax changes were made, in chronological order. In addition, fret diagram properties have been moved to `fret-diagram-details`, and `#'style` property is used to select solid/dashed lines instead of `#'dash-fraction`.

```
#'break-align-symbol -> #'break-align-symbols
scripts.caesura -> scripts.caesura.curved
\setEasyHeads -> \easyHeadsOn
\easyHeadsOff (new command)
\fatText -> \textLengthOn
\emptyText -> \textLengthOff
\set hairpinToBarline -> \override Hairpin #'to-barline
\compressMusic -> \scaleDurations
\octave -> \octaveCheck
\arpeggioUp -> \arpeggioArrowUp
\arpeggioDown -> \arpeggioArrowDown
\arpeggioNeutral -> \arpeggioNormal
\setTextCresc -> \crescTextCresc
\setTextDecresc -> \dimTextDecresc
\setTextDecr -> \dimTextDecr
\setTextDim -> \dimTextDim
\setHairpinCresc -> \crescHairpin
\setHairpinDecresc -> \dimHairpin
\sustainUp -> \sustainOff
\sustainDown -> \sustainOn
\sostenutoDown -> \sostenutoOn
\sostenutoUp -> \sostenutoOff
infinite-spacing-height -> extra-spacing-height
#(set-octavation oct) -> \ottava #oct
\put-adjacent markup axis dir markup -> \put-adjacent axis dir markup markup
\center-align -> \center-column
\hcenter -> \center-align
```

- Metronome marks can now also contain a textual description. The duration and count (if given) are shown in parentheses after the text.



- In figured bass you can now also use a backslash through a number to indicate a raised 6th step.



- Arpeggios may now use “parenthesis” style brackets:



- Enclosing text within boxes with rounded corners is now possible, using the `rounded-box` command.
- `lilypond-book` can run any program instead of `latex` to guess the line width, thanks to `--latex-program` command line option.
- Underlining is now possible with the `\underline` markup command.
- It is now possible to specify, using the `page-count` variable in the paper block, the number of pages that will be used.
- A new page breaking function, `ly:minimal-breaking`, is dedicated to books with many pages or a lot of texts.
- A table of contents is included using `\markuplines \table-of-contents`. Elements are added to it using the `\tocItem` command.
- Text spreading over several pages is entered using the `\markuplines` keyword. Builtin markup list commands, such as `\justified-lines` or `\wordwrap-lines` may be used, and new ones created using the `define-markup-list-command` Scheme macro.
- Particular points of a book may be marked with the `\label` command. Then, the page where these points are placed can be referred to using the `\page-ref` markup command.
- Page breaking and page turning commands (`\pageBreak`, `\noPageBreak`, etc) can be used at top-level, between scores and top-level markups.
- The following options are now changed as a `-d` sub-option: `--backend`, `--safe`, `--preview` and `--no-pages` (which became `-dno-print-pages`). The `-b` option does not exist any more.
- Improved testing procedure now catch changes in CPU and memory performance, page layout, MIDI results and warnings. This helps to reduce the number of regression errors during development, resulting in more stable releases.

See [INSTALL.html#testing](#) for more information.

- Nested properties, such as `details` in `Slur`, can be reverted as well. The syntax for this is

```
\revert Slur #'(details closeness-factor)
```

- All line spanners are more flexible now in the configuration of their end points. This includes glissando, voice followers, text crescendos and other text spanners. The old syntax for setting text on line spanners is no longer valid.



This feature was sponsored by Trevor Baa.

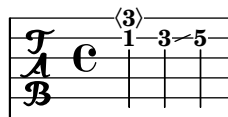
- The environment variable LILYPONDPREFIX has been renamed to LILYPOND\_DATADIR.
- Notes or rests, such as a typical end note, that fill an entire measure are preceded by some more space.



- All \scores in a lilypond-book fragment are now inserted into the document. Also, toplevel markups don't result in an entire page.
- Alterations (such as a sharp and flat) may now be arbitrary fractions. This allows some forms of microtonal music. For example, Turkish makam music uses 1/9th tone alterations.



- Tie directions may be set with ^^ and \_~
- Tablature now supports harmonics and slides,



This feature was sponsored by Mike Amundsen

- Horizontal spacing now follows object outlines more accurately. This allows tighter horizontal spacing.



- Objects that belong outside of the staff are now positioned automatically to avoid collisions.

this goes above the previous markup  
this doesn't collide with the c



this goes below the dynamic

- Staves are spaced vertically using a skyline algorithm. This helps to avoid uneven vertical spacing.

